

Getting start

Welcome to Infinite IoT Lighting instruction manual! This manual has been designed to help you get the most out of your smart devices. Whether you are a first-time user or an experienced pro, we hope you will find the information in this manual helpful and easy to follow.

In this manual, you will learn how to create a new account, create a project on the APP, add devices and configure the lighting system. We have organized the information into 9 sections to make it easy to find what you're looking for.

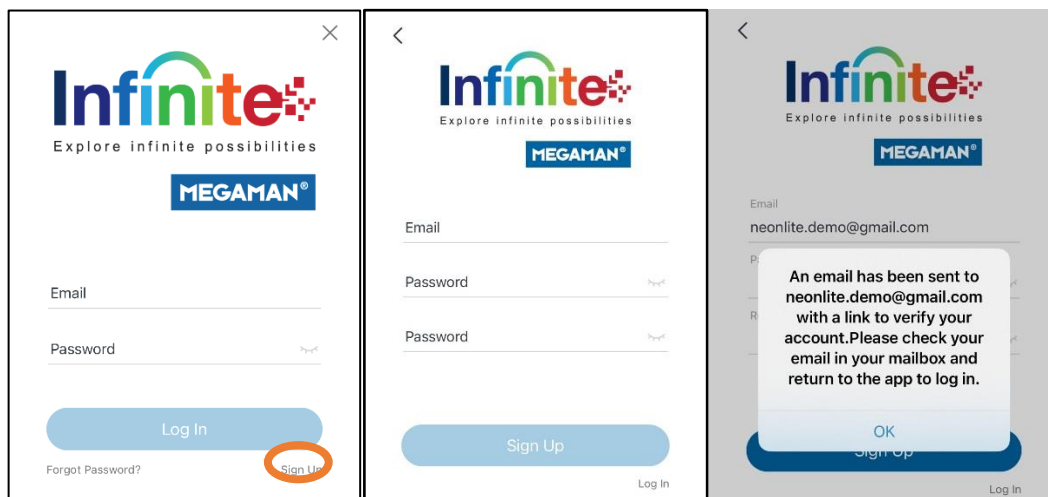
We hope you enjoy using Infinite IoT Lighting and that this manual helps you get the most out of it. If you have any questions or need further assistance, please don't hesitate to <https://www.megaman.cc/products/smart-lighting/infinite-iot-lighting/resources>

Registration

To begin using the Infinite IoT lighting system, you will need to create an account. To do this, follow these steps:

1. Tap the "Sign up" button.
2. Enter an email address as the username for your account.
3. Create a password for your account.

Please see the attached images for reference.



To complete the sign-up process, you will need to fill in your email and password and then press the Sign Up button. After you do this, a dialog box will pop up and notify you that a verification email has been sent to your mailbox. To verify your email address, go to your mailbox, find the verification email, and click the

link provided in the email.

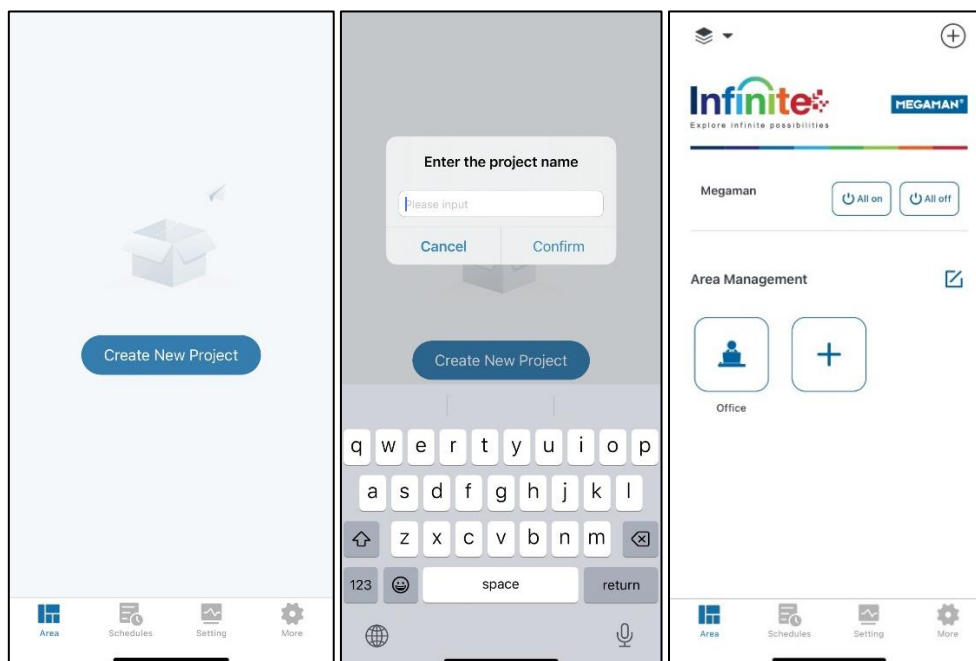


After the account was verified, you can login to the application.

Create project

After registering the first thing you will want to do is created a new project. To do this, follow these steps:

1. Press the "Create New Project" button.
2. Enter a name for your project.
3. Press "Confirm" to create the project.




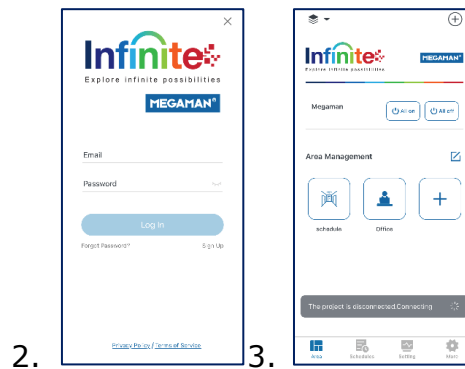
After creating the project, you can now create new Area and add devices for your project

Add Devices

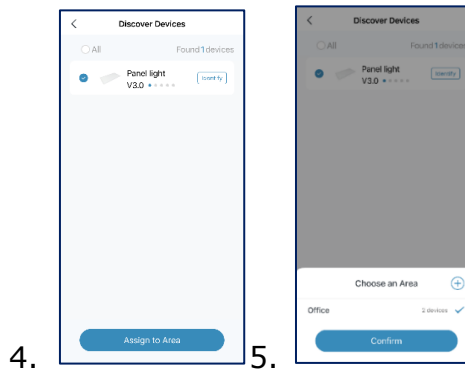
Adding luminaires, drivers, relay and light sources

Please follow the steps for pairing the luminaires, drivers and light sources.

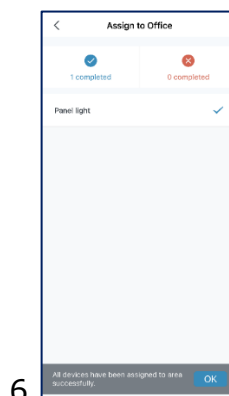
1. Power on the driver.
2. Open the APP and login.
3. Press the  button on the top right corner to "Discover Devices" page.




4. Select the available device(s), then press "Assign to Area".
5. A pop up appears and assign devices to areas.

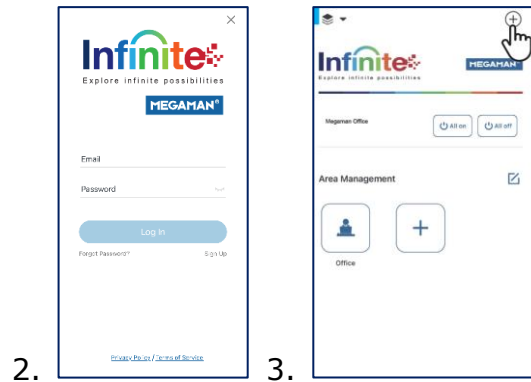


6. Tick symbol appears if the device pair to the network successfully. Press OK button to leave the pairing process.

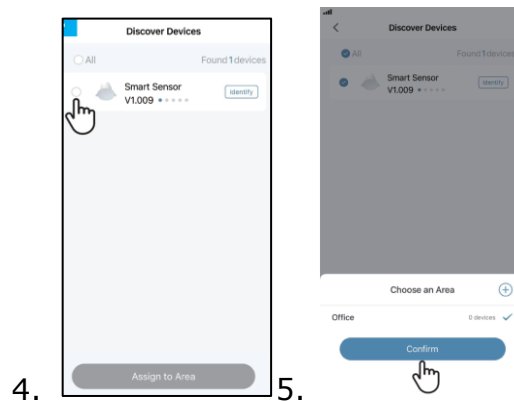


Adding sensors

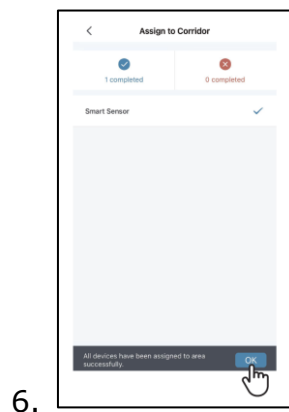
1. Power on the sensor.
2. Open the APP and login.
3. Press the  button on the top right corner to "Discover Devices" page.




4. Select the available device(s), then press "Assign to Area".
5. A pop up appears and assign devices to areas.

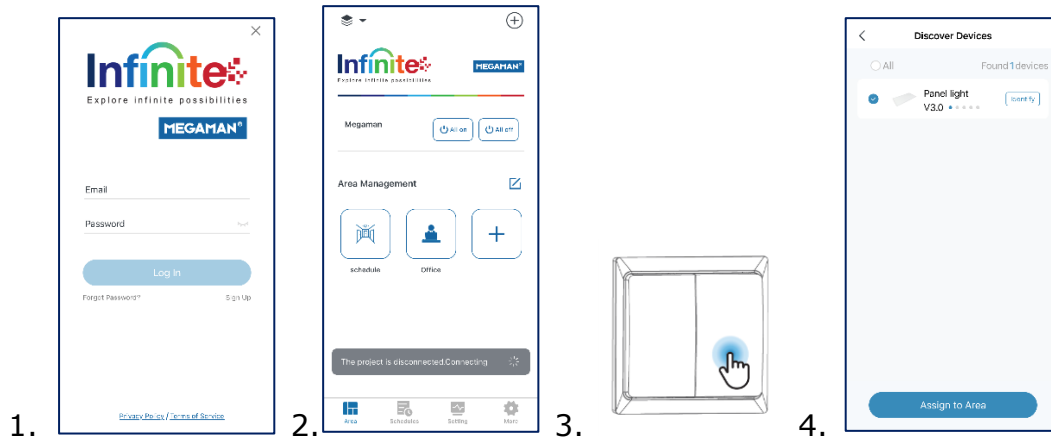


6. Tick symbol appears if the device pair to the network successfully. Press OK button to leave the pairing process.

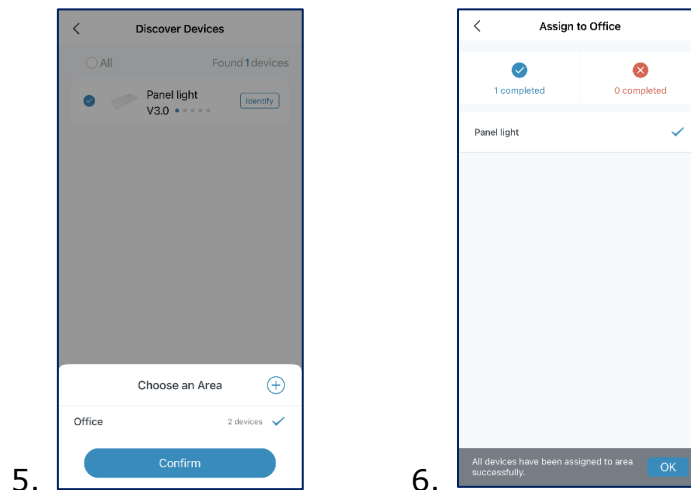


Adding smart switches

1. Open the APP and login.
2. Press the  button on the top right corner to "Discover Devices" page.
3. Press any one key on the switch.
4. Select the available device(s), then press "Assign to Area".



5. A pop up appears and assign devices to areas.
6. Tick symbol appears if the device pair to the network successfully.



7. Press OK button to leave the pairing process.

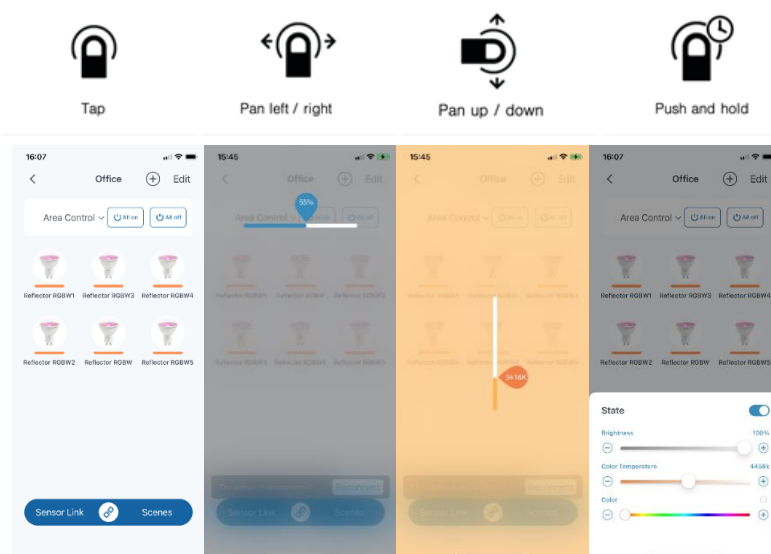
Lighting control

All luminaires, bulbs, drivers and relays are paired to your network will be displayed in the area pages. For each lighting device, an icon picture and a name are displayed. The lighting devices show the area page can be rearranged by pushing Edit, selecting and holding the icon, the dragging to the different position and then release the icon in its new position. Push Done when finished set up.

Basic gestures

There are basic gestures for controlling all lighting devices, like luminaires, bulbs and drivers:


1. Tap the device icon to turn the device on or off.
2. Pan left or right on the luminaire icon adjust the luminaire light level. The app remembers the set level so, if you turn on the luminaire off and on again using the tap gesture, it will return to that level.
3. Pan up or down on the luminaire icon to adjust the colour temperature of a tunable white luminaire
4. Push and hold the luminaire icon to open the main adjustable parameters
 - For colour changing luminaires you can set the desired colour. It is possible to save your favorite colours to the palette. Set the colour and then select and hold an empty palette space to save it. The colour palette cannot be reset but saved colours can be over-written with new colours.
 - If your luminaire supports more than one channel, you can adjust the channels separately.

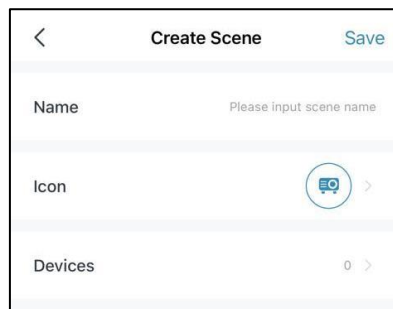


Create scenes

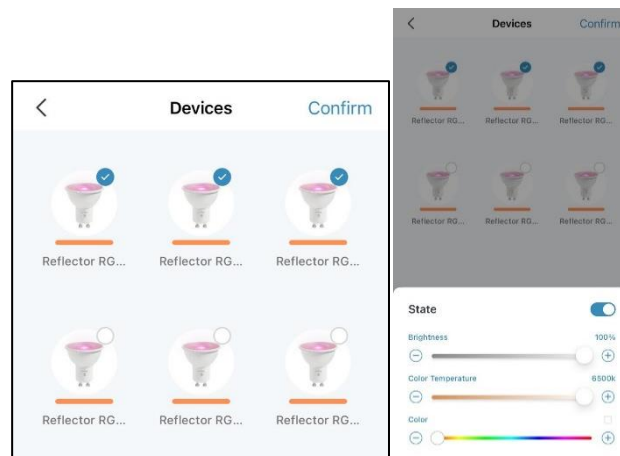
1. To create a scene, tap on the Scenes button.



2. Press the  button on the right of the App Scenes section
3. Create the scene name, select the icon and select devices which will be involve in the scene.



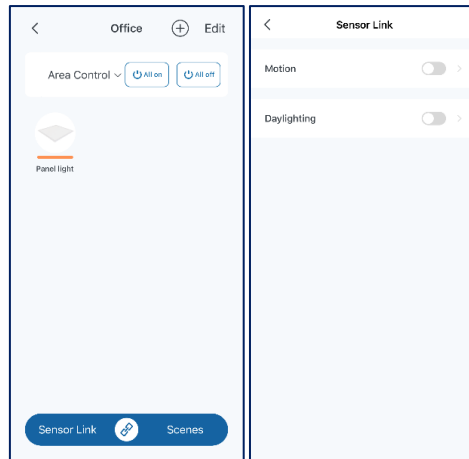
4. Select devices which will involve in the scene and tap on the devices to adjust their status for the scene.



Setting on sensor

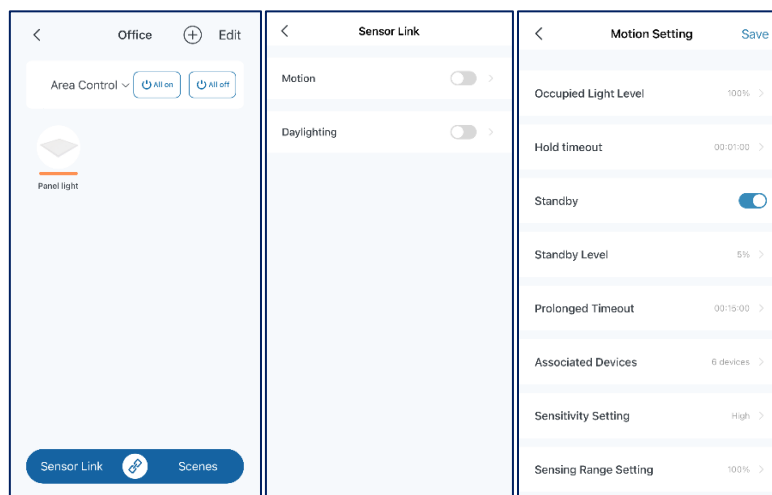
Infinite Smart Sensor is a 2-in-1 sensor which contains microwave motion sensor and ambient lighting sensor. The microwave sensor is used for configuring automation when detect the existence; while the ambient lighting sensor is measuring the ambient light brightness to adjust the brightness of the luminaires.

Once a sensor is paired and is added into an area, the Sensor Link setting is enabled and both Motion and Daylighting automation can be configured.



Motion Settings

To create automation with motion setting, please enter an area and tap on Sensor Link and then activate motion and enter the Motion Setting page.



To set up the motion automation, there are the parameters to enter and there are their meanings.

a. Occupied Light Level

When someone here, the lights will be set to the desired brightness level.

b. Hold timeout

The holding time for the occupied brightness level since the last detection.

c. Standby

Enable standby period will let the lights dim down for a certain period and then turn off the lights after the period.

If Standby is disabled, the light will turn off immediately after the time

MEGAMAN

- on Hold time duration passed
- d. Standby Level
The brightness level during the standby period.
- e. Prolonged Timeout
The length of the standby period
- f. Associated Devices
Select the devices that you want to control.
- g. Sensitivity Setting
This is the scanning frequency of the microwave sensor
- h. Sensing Range Setting
This is the power output of the microwave sensor

Example:

Hotel corridor

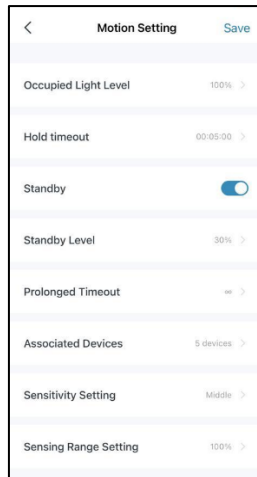
It is the most common usage for corridors, any person walking in the corridor or outside the lift, the lights will be brightened up. Hence, in this case, there are 3 areas which are grouped in orange rectangles.

All the lights in the same rectangle will be 100% when people are here. After a while, the lights will dim down and keep the brightness level until other people come



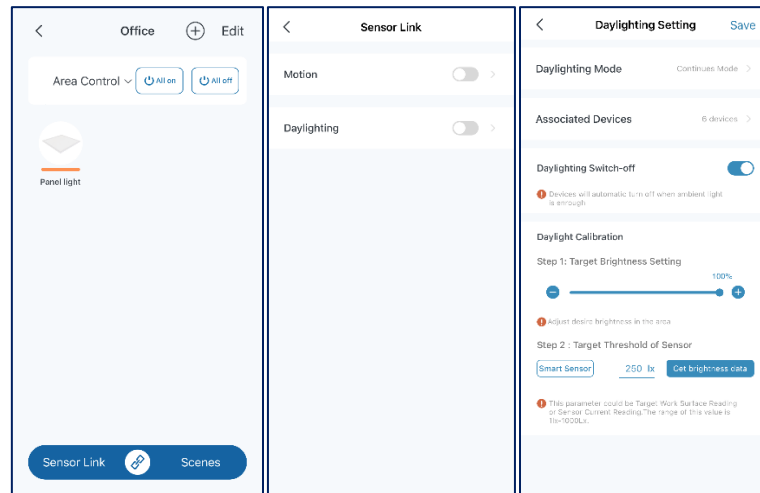
There are the settings of the areas, each area can maximum add 5 sensors and any one of the sensors is triggered, all the light in the area will be

brighten up to 100%



Daylighting setting

To create automation with Daylighting, please enter an area and tap on Sensor Link and then activate Daylighting and enter the Daylighting Setting page.



To set up the daylight harvesting

- a. Daylighting Mode
 1. Continues Mode
 2. On/ Off Mode
- b. Associated Devices

Continues Mode

- c. Daylighting Switch-off

The devices will turn off when ambient light is enough.

- d. Daylight Calibration

Step 1: Target Brightness Setting

Adjust the desire brightness in the area

Step 2: Target Threshold of Sensor

Press "Get brightness Data" to get the environment brightness and the value is between 10Lx – 1000Lx.

The parameter is the target reading of each sensor, the sensor will tune the brightness of the Associate devices to get the reading

On/Off Mode

- e. Full on threshold

Devices will turn on when ambient light is lower than the threshold.

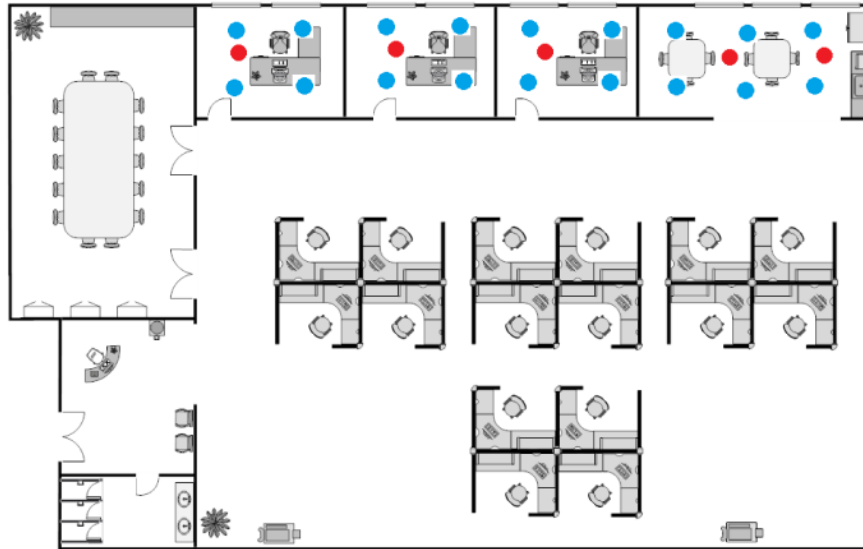
- f. Full off threshold

Devices will turn off when ambient light is higher than the threshold.

Example:

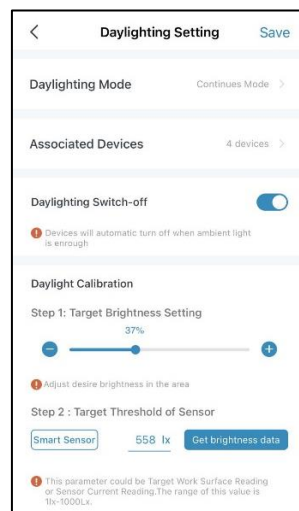
Office

It is often to save energy by daylight harvesting by measuring the brightness of the environment in the area nearby windows. There are examples on the floor plan below. The rooms were applied the continues mode and the pantry will be applied the On/Off mode.

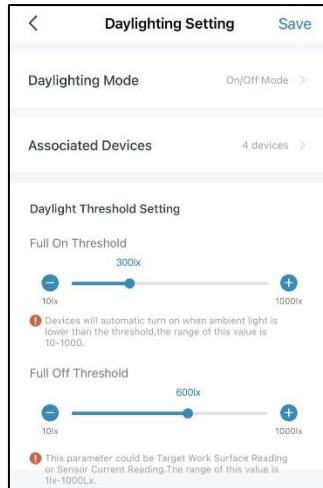


There are 3 rooms applied continues mode and the panel light will adjust automatically if the ambient brightness is lower than 558lx, the penal lights in the area will bright up gradually; while if the ambient brightness is higher than 558lx, they will dim the light automatically

There are the correct settings.

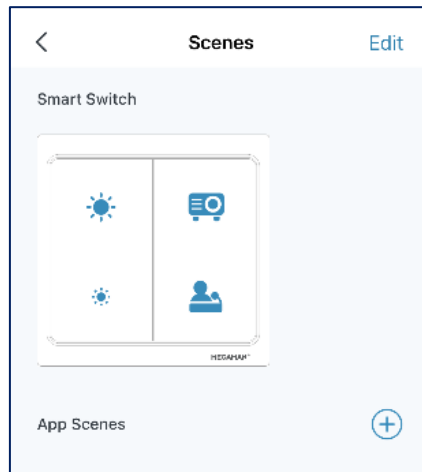


In the pantry, the On/Off mode is applied as the setting below. When the ambient brightness is lower than 300lx the lights turn on; while if the ambient brightness is higher than 600lx, the lights turn off.



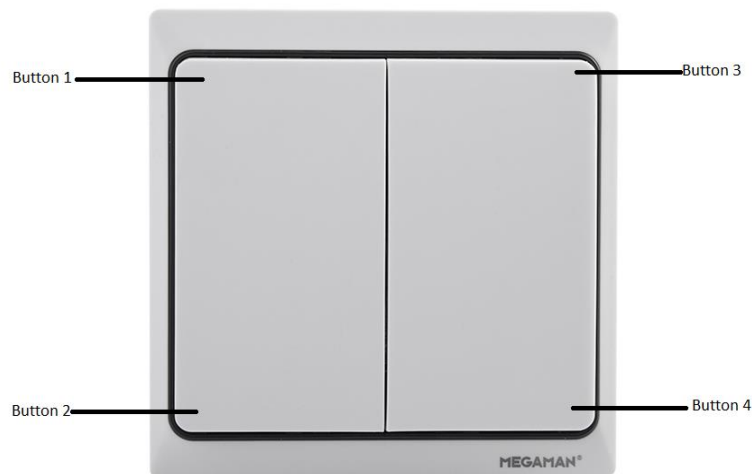
Setting on Smart switch

Infinite Smart switch is a battery-free controller for the system. The default functions of the switch are turning on/off the lights, changing brightness, changing colour temperature and 2 default scenes, i.e. all lights 80% and 30% respectively.



Operation

There are the operation methods of the switch



For each area, there are maximum 3 switches available to be added. After adding the switch to the area, you can:

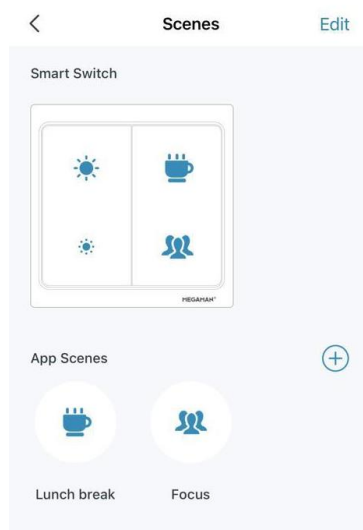
1. Turn on the light by pushing button 1 once.
2. Turn off the light by pushing button 2 once.
3. Brighten up the light by keep pressing button 1.
4. Dimming down the light by keep pressing button 1.



5. Push button 3 once to play the default scene 1
6. Push button 4 once to play the default scene 2
7. Increase the colour temperature by keep pressing button 3.
8. Decrease the colour temperature by keep pressing button 4.

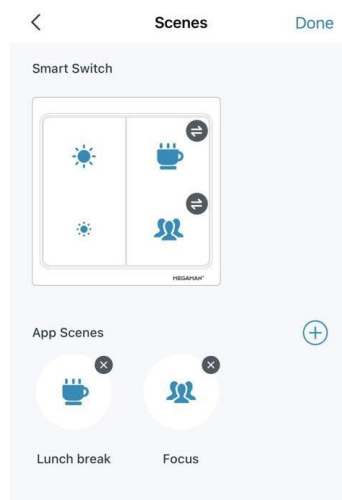
Assign scenes to the button 3 and button 4

If you have already set up customized scenes and want to play the scenes on the smart switch. Please follow the following steps.



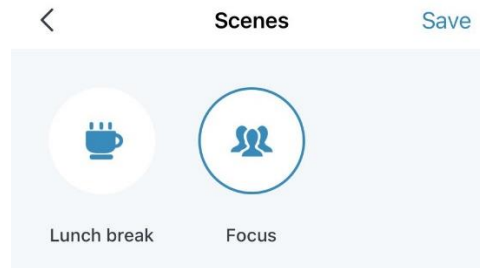
1.

Go to the scene page to make sure you have paired smart switch and some customized scenes have been added. Then, press Edit button on top right corner.



2.

After tapping on Edit button, select button 3 or button 4 on this setting page and then select a scene on the next page.



3.

After select a scene, tap save button and the setting is finished.

4. Then, you can try to press the switch button to check if it plays the correct scene.

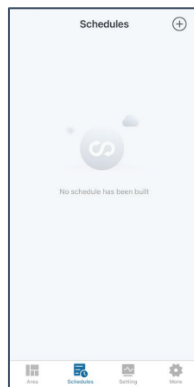
Schedule

Schedule is used for switching on/off and play scenes at a particular time or periodically for the whole project or an area.

Create Schedules

To create schedules for repeated actions, please follow the steps.

1. Tap on the schedules tab



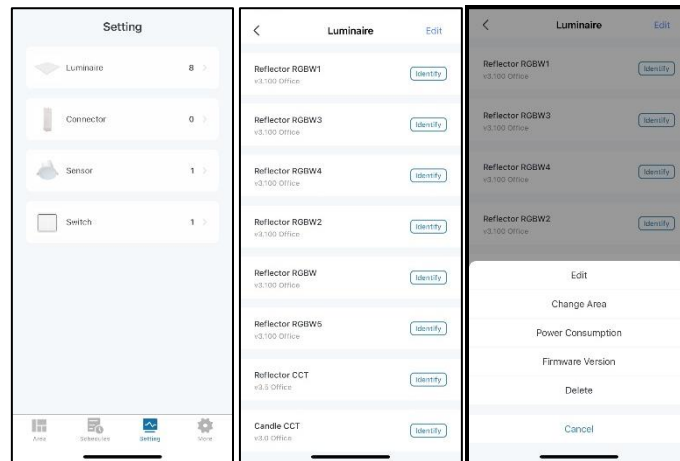
2. Tap on the add schedule button on the top right corner.
3. Create the name of the schedule

4. Select the target object, you can select the whole project, an area or a scene. For selecting a project or an area, you can turn on/off the light. For selecting a scene, the scene will play on the time you select

5. Select the date when the schedule will work.
You can select a specific date or Sunday to Saturday for repeating every week.
6. Select the time when the schedule will work.

Setting

The setting page on the app offers a place to manage your devices. You can rename the devices, move the devices to other areas. Moreover, the daily and weekly power consumption are also recorded for the luminaires, drivers and relays. Furthermore, the firmware update is also available, once the latest version of firmware is available, you can see a red spot on the device icon to indicate that you can update it thru Over the Air (OTA).



There are categorized a few types of the devices, luminaire, connector, sensor and switch.

Rename

Once you enter any type of device, you can select any devices to rename the device. For example, selecting a lamp from Luminaire, then the action menu pops up from the bottom of the screen. Then, select Edit on the menu and enter the page to rename the lamp.

Change Area

If you want to move a lamp to another area you can do it on this setting section. For example, tap on a lamp icon and the action menu pops up from the bottom of the screen. Then, tap Change Area on the menu and enter the page to select the area you want the lamp be there.

Power Consumption

You can check the power consumption of the Luminaire and Connector devices.

For example, tap on a lamp icon and the action menu pops up from the bottom of the screen. Then, tap Power Consumption to check the information of daily power consumption and monthly consumption.

Firmware Version

Once you see a device get a new firmware, you can tap the Firmware Version to start the OTA process.

Caution: please keep the luminaire power on and keep the mobile device and the target luminaire close during OTA.

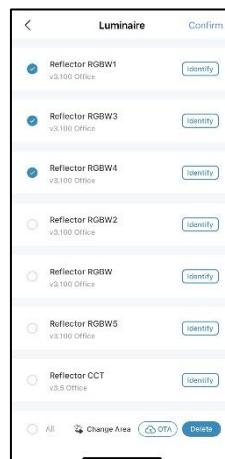
DO NOT leave the page before the update is completed.

Delete

The popup menu also gets Delete function; you can simply tap on Delete to remove the device from the project.

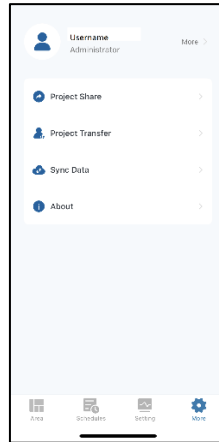
Bulk action

You can tap Edit to select multiple of devices, so you can update the firmware, move devices to another area and delete devices.



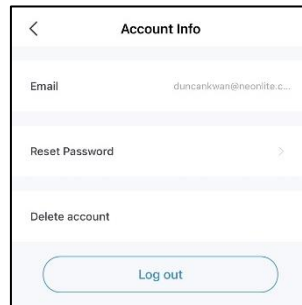
More setting options

On More tab, you can manage your account and also can share the project to other users and transfer the ownership of the project.



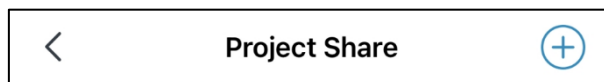
Account Info

You can see your user name and your role in this project. You can also tap on More to reset password and delete account to opt out. Besides, you can log out your account here.



Project Share

You can share your projects to other users as administrators or as users. You can enter Project Share and tap on the add button on the top right corner.



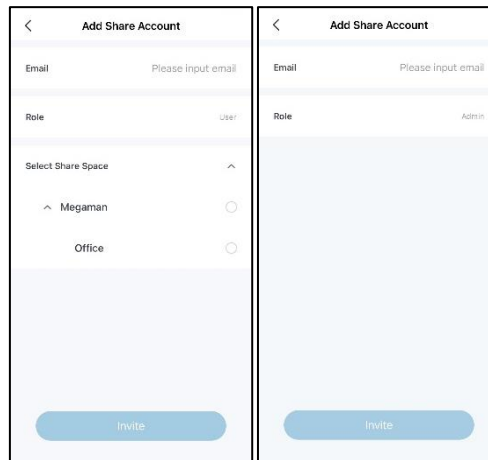
After entering the page, type an email address of an existing user, then select a role for the user.

There are 2 roles, administrator and user.

Administrator can add devices, add areas, create scenes, add schedules and

share projects to other users.

User can only control the devices in the areas which were authorized and create scenes on the authorized lighting.

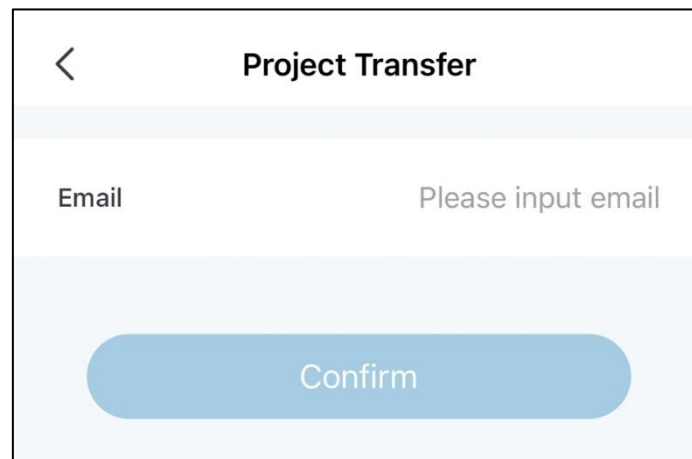


Project Transfer

Who is the owner of a project?

If you have created the project or the project was transferred from others

If you are the owner of a project, you can transfer the ownership of the project to another person.



Sync Data

If you change any settings on the project, you can save the setting on the cloud and other users will get the latest setting when they user

Thank you

If you have any questions or need additional assistance with using our product, please feel free to visit our online resources at <https://www.megaman.cc/products/smart-lighting/infinite-iot-lighting/resources>

We value your feedback and suggestions! If you have any comments or ideas for how we can improve our product, please don't hesitate to get in touch. You can use the contact form on our website at <https://www.megaman.cc/about-us/contact-us> .

Thank you for choosing our product! We hope you find it useful and enjoyable. If you have any questions or need further assistance, please don't hesitate to contact us. We're here to help!

I hope these examples are helpful! Let me know if you have any questions.