



Scan the QR code to find out more



© Copyright 2015. All rights reserved by MEGAMAN®
All information stated is correct at the time of printing and subject to changes without prior notice.

www.megaman.cc

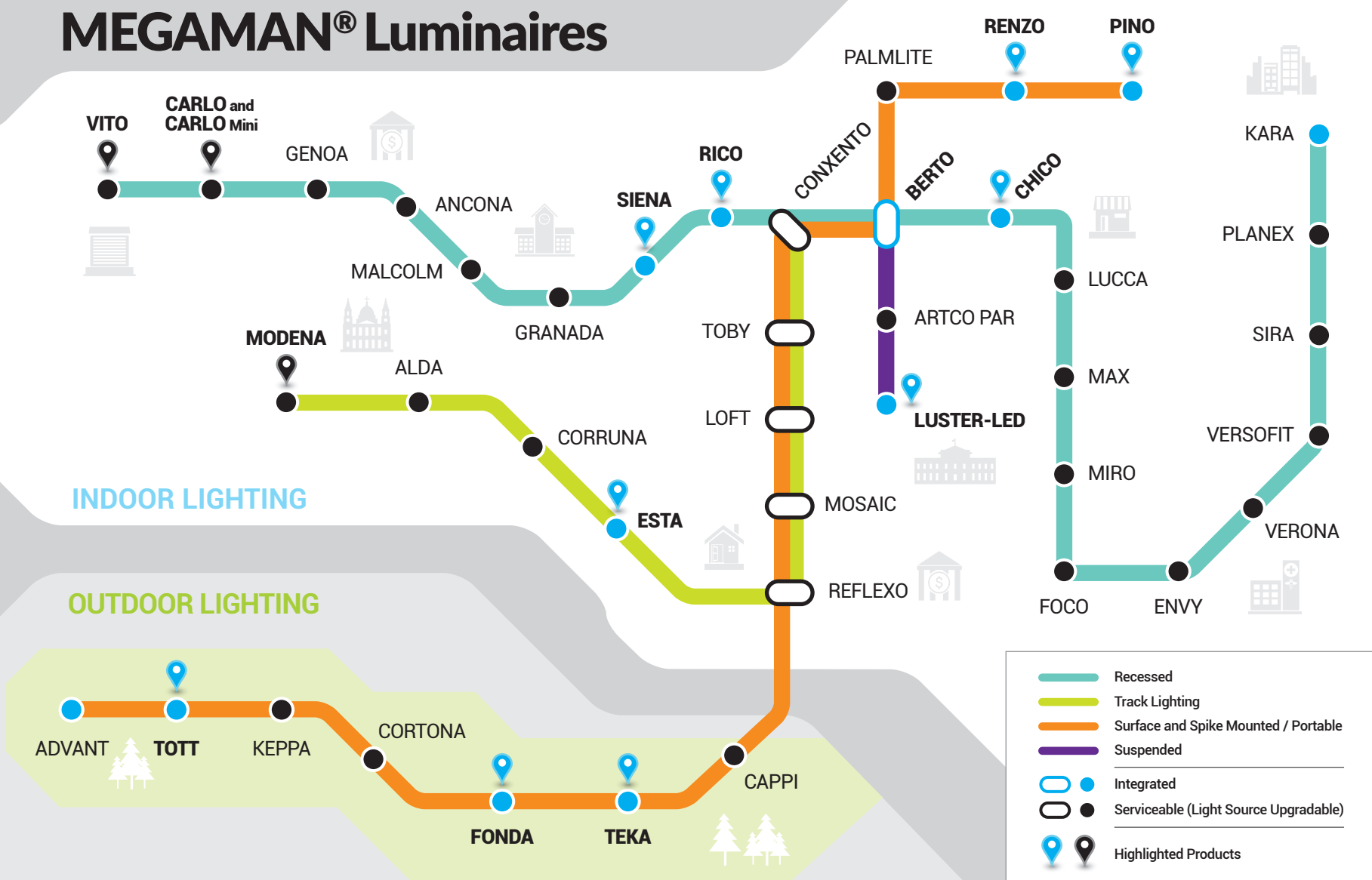
MEGAMAN®

Designed to replace traditional fluorescent and even metal halide fixtures using halogen, CFL, linear MEGAMAN® Retrofit Luminaires provide a better solution in a wide range of applications in terms of energy efficiency and sustainability.

Extensive Range



Welcome to the World of MEGAMAN® Luminaires



Wide Application



MEGAMAN® Luminaires Highlights



TOTT

Integrated LED Floodlight for Outdoor Halogen Replacement

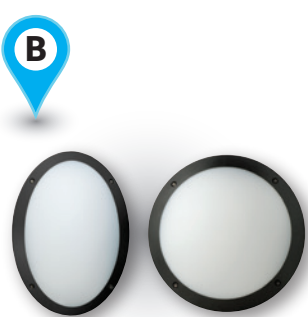
- Up to IP65 protection
- Flexible tilt angle for directional floodlighting
- Uniform floodlight illumination in compact profile



TEKA

Spike-mounted Lighting with IP66 Protection

- Integrated LED with built-in driver
- Flexible tilt angle of 180° for directional lighting
- IP66 protection and rust-free finish for outdoor applications
- Durable polycarbonate material



FONDA

LED Bulkhead with Vandal Resistant Construction

- Corrosion free tough polycarbonate
- IK10 for high vandal resistance
- IP66 protection from water and dust
- Oval and round options available



VITO

Energy-efficient Replacement for 70W Metal Halide

- Works with MEGAMAN® TECOH® RDx LED module
- Provides multi-directional tilting
- Delivers superb lighting performance up to 5600lm
- Offers high cut-off angle of 46° to ensure visual comfort
- Perfect White options available



CARLO & CARLO Mini

Perfect Downlight to Replace up to 50W Metal Halide

- Works with MEGAMAN® TECOH® RDx and MHx LED modules
- Offer excellent lighting performance of up to 3800lm
- Ultra flexible with 45° tilting angle and 355° rotation angle
- Perfect White options available



SIENA

Low-energy Integrated LED Downlight with a Complete Range of Sizes

- Full range of sizes from 2.5" to 8" diameter
- No external driver required which facilitates easy installation and maintenance
- IP44 rated diffuser version for damp locations
- Options available in INGENIUM® BLU, Dim to Warm and linear dimming technologies



RICO

LED Recessed Downlight with Ultra Slim Profile

- Ultra slim profile for any ceiling recess with limited depth
- Full range of sizes from 3" to 8" diameter
- Allows use with standard dimming drivers such as DALI, DSI or 1-10V for linear dimming
- Uses an external driver with industry standard constant current levels



CHICO

Ideal Replacement for Halogen PAR16 Spot Lights and GX53 Downlights

- Replaces halogen PAR16 spot lights and GX53 downlight
- Built-in LED and integrated driver
- Available in fixed and adjustable versions



PINO

True Replacement for Traditional T5 Battens

- High system luminous efficacy up to 100lm/W
- Translucent end caps reduce dark zone
- Unique extendable built-in connector makes maintenance easy
- Multiple connections allows for different length applications: 0.6m, 1.2m and 1.5m



RENZO

Integrated LED Bulkhead with a Wide Range of Lumen Package

- Replaces interior CFL luminaires
- IP44 version available for high moisture locations
- Built-in microwave motion sensor option available
- Suitable for surface mounting on solid walls or ceilings



MODENA

LED Track Lighting to Replace up to 70W Metal Halide

- Works with MEGAMAN® TECOH® RDx and MHx LED modules
- Replaces up to 70W metal halide
- Delivers powerful lighting performance up to 4500lm
- Adjustable arm for multi-directional lighting



ESTA

Integrated LED Track Lighting with Soft but Precise Beam

- MEGAMAN® patented design and Thermal Conductive Highway™ technology
- Replaces 50W halogen MR16, PAR16 and 75W halogen AR111 track lightings
- Compact size with precise beam angle
- Adjustable arm for multi-directional lighting
- Interchangeable decorative housing trims



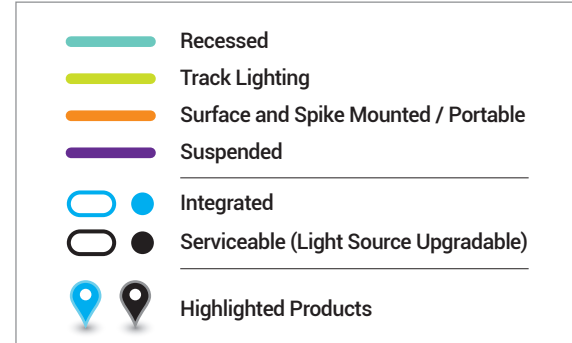
LUSTER-LED

Low-energy Alternative to HID High Bay Pendant

- Aluminum housing with built-in driver
- Two versions available:
 - Standard E27 screw base for MEGAMAN® LED CLUSTERLITE®
 - LED chip-on-board with integrated driver
- Excellent Luminous output up to 11000lm

MEGAMAN® Luminaires

Product Family

**GENOA**

5" Recessed Downlight



Max. 30W | Ø150 x H101mm
TECOH® CFx | PHJ65d-2
• Available in 06° option.

ANCONA

Trimless Recessed Downlight



Max. 15W | W153 x L153 x H180mm
LED AR111 | G53
• Available in 2-head version.

CONXENTO

Adjustable Recessed Downlight



Max. 15W | Ø164 x H137mm
LED AR111 | G53
• With LED PAR30 and GX53 options.

MALCOLM

Adjustable Recessed Downlight



Max. 15W | Ø170 x H140mm | LED PAR30 | E27
• With LED MR16, PAR16 and AR111 options.
Available in square trim, 2 and 3-head versions.

VITO

Adjustable LED Recessed Downlight

**70W Metal Halide Replacement**

DC43-48V (1400mA)
60W
5100lm [3000K] / 5600lm [4000K]
13000cd [35°] / 6600cd [60°]
3000K / 4000K [Ra82]
Ø170 x H135mm
Dimmable
50,000hrs
TECOH® RDx
• With Perfect White option.

CARLO and CARLO Mini

Adjustable LED Recessed Downlight

**50W Metal Halide Replacement**

DC31-37V (1050mA)
35W
3600lm [3000K] / 3800lm [4000K]
7500cd [35°] / 4500cd [60°]
3000K / 4000K [Ra82]
Ø170 x H135mm
Dimmable | 50,000hrs | TECOH® RDx
• 20W and 35W metal halide replacement options available.
With TECOH® Mh-L LED module and Perfect White options.

CHICO

Integrated LED Recessed Downlight



220-240V
5W
300lm
2800K / 4000K [-Ra80]
Ø104 x H28mm
15,000hrs
• With PAR16 spot light option.
Available in fixed version.

LUCCA

Adjustable Recessed Downlight



Max. 8W | Ø105 x H35mm | LED PAR16 | GU10
• With LED MR16 option.
Available in fixed version.

MAX

Adjustable Recessed Downlight



Max. 8W | Ø80 x H36mm | LED MR16 | GU5.3
• With LED PAR16 option.
Available in fixed version.

MIRO

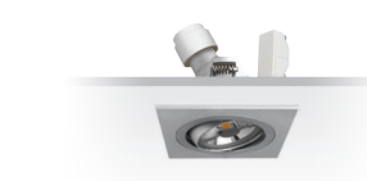
Adjustable Recessed Downlight



Max. 8W | Ø85 x H43mm | LED PAR16 | GU10
• With LED MR16 and IP65 options.
Available in fixed version.

FOCO

Adjustable Recessed Downlight



Max. 8W | W92 x L92 x H41mm | LED PAR16 | GU10
• With LED MR16 option.
Available in fixed and 3-head versions.

ENVY

Recessed Downlight



Max. 8W | Ø95 x L153 x H12mm
LED PAR16 | GU10
• With IP20 and IP44 versions.

GRANADA

Recessed Downlight



Max. 20W | Ø193 x H230mm
LED PAR38 | E27
• With PAR30S option.

VERONA

Adjustable Recessed Pin-hole Wall Washer



Max. 8W | Ø95 x H137mm
LED PAR16 | GU10
• Available in fixed version.

VERSOFIT

LED Fire Rated Recessed Downlight



Max. 8W | Ø95 x L178 x H108mm
TECOH® Thx
• Available in fixed version.

MODENA

LED Track Lighting

**70W Metal Halide Replacement**

220-240V
55W
4100lm [3000K] / 4500lm [4000K]
13000cd [25°] / 7500cd [45°]
3000K / 4000K [Ra82]
Ø110 x L165 x H219mm
Dimmable
50,000hrs
TECOH® RDx
• 20W and 35W metal halide replacement options available.
With TECOH® RDx LED module and Perfect White options

ALDA

Track Lighting



Max. 15W | Ø124 x L135 x H273mm
LED AR111 | GU10

CORRUNA

Track Lighting



Max. 15W | W134 x L116 x H233mm | LED AR111 | GU10
• With LED PAR30 and PAR16 options.

ESTA

Integrated LED Track Lighting

**75W Halogen AR111 Replacement**

220-240V
15W
950lm
20000cd [8°] / 5000cd [24°] / 2000cd [36°]
2800K [Ra82] / 4000K [Ra85]
Ø111 x H193mm
40,000hrs
• 50W halogen MR16 and PAR16 replacement options available.

SIRA

Adjustable Recessed Downlight



Max. 6W | Ø87 x H68mm
LED PAR16 | GU10

PLANEX

Recessed Downlight



Max. 7W | Ø104 x H39mm
LED GX53 | GX53
• Available in polycarbonate and steel versions.

KARA

Integrated LED Adjustable Recessed Floodlight



DC28-33V (1400mA) | 43W
4100lm [3000K] / 4500lm [4000K]
1900cd | 3000K / 4000K [-Ra80]
W138 x L228 x H113mm
Dimmable | 25,000hrs

REFLEXO

Track Lighting



Max. 8W | Ø70 x L88 x H216mm | LED PAR16 | GU10
• With LED MR16 option.
Available in surface mounted option.

MOSAIC

Track Lighting



Max. 8W | W58 x L77 x H225mm | LED PAR16 | GU10
• With LED MR16 option.
Available in surface mounted option.

LOFT

Track Lighting



Max. 20W | Ø86 x L118 x H212mm | LED PAR38 | E27
• With LED PAR30 and AR111 options.
Available in surface mounted option.

TOBY

Track Lighting



Max. 15W | Ø117 x H210mm
LED AR111 | GU10
• With LED AR111 (G53) option.
Available in surface mounted option.

CONXENTO

Track Lighting



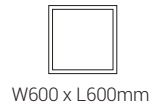
Max. 7W | Ø114 x L132 x H208mm
LED GX53 | GX53
• Available in surface mounted option.

BERTO

Integrated LED Panel



DC29-33V (1400mA) | 43W
3800lm [3000K] / 4100lm [4000K] / 4300lm [5000K]
3000K / 4000K / 6500K [-Ra80]
50,000hrs



• Available in W600 x L1200mm and W300 x L1200mm options.

CONXENTO

Surface Mounted Luminaire



Max. 7W | Ø132 x H66mm
LED GX53 | GX53

PALMLITE

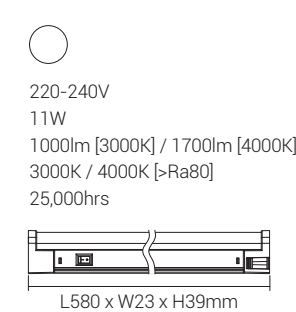
Surface Mounted Luminaire



Max. 7W | Ø83 x H18mm
LED GX53 | GX53

PINO

Integrated LED Batten



• Available in L880mm version.

RENZO

Integrated LED Bulkhead



220-240V
15.5W
1100lm
3000K / 4000K [-Ra80]
Ø340 x H105mm
25,000hrs
• Available in Ø280 and Ø390mm options.

LUSTER-LED

Integrated High Bay LED Pendant



220-240V | 110W | 11000lm | 4000K [-Ra80]
Ø416 x H487mm | 50,000hrs

High Bay LED Pendant



Max. 35W | Ø310 x H350mm
LED CLUSTERLITE® | E27

ADVANT

Portable Floodlight



220-240V | 19W | 1350lm | 3000K / 4000K [Ra80]
W272 x L222 x H330mm | 25,000hrs

KEPPA

Surface Mounted Floodlight



Max. 35W | W165 x L364 x H296mm
LED CLUSTERLITE® | E27

TOTT

Integrated LED Floodlight



12W | 900lm | 600cd | 3000K / 4000K [Ra80]
W86 x L114 x H104mm | 25,000hrs
• With IP54 version.
Medium and large sizes available.

Surface Mounted Floodlight



Max. 7W | W96 x L138 x H178
LED R7s | R7s
• Medium size available.

FONDA

Integrated LED Round Bulkhead



220-240V
11.5W
800lm
3000K / 4000K [-Ra80]
Ø298 x H91mm
25,000hrs
• Available in oval option.

ARTCO PAR

Suspended Luminaires



Max. 20W | Ø80 x H1630mm
LED PAR38 | E27

CORTONA

Surface Mounted Floodlight



Max. 30W | W118 x L185 x H272mm
TECOH® CFx | PHJ65d-2

CAPPI

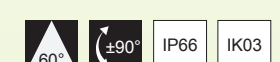
Spike Mounted Luminaire



Max. 16W
Ø70 x H458mm
LED PAR38
E27

TEKA

Integrated LED Spike Mounted Luminaire



220-240V
10.5W
700lm
520cd
3000K / 4000K [Ra80]
W130 x Ø100 x H476mm
25,000hrs