

MEGAMAN®

Commercial Lighting



MEGAMAN®

Commercial Lighting

Office environments are rapidly changing to keep pace with today's fast-moving workstyles. The need to accommodate this flexibility brings significant challenges to how commercial lighting is designed and managed.

MEGAMAN® Commercial Lighting is designed to satisfy the dynamic demands of modern offices - enhancing the well-being and productivity of staff, reinforcing the corporate image and offering substantial savings in running costs.



Reception

- 1 **GABIO LED Pendant Louvre (High Ceiling)**
FLP70000v0-4000K
- 2 **ANCONA Recessed Downlight (High Ceiling)**
F30817RC / LR1812d-50H45D-GU10-2800K



Product Display

- 3 **MARCO Integrated LED Tracklight (High Ceiling)**
FTK70100v1-ru+045D-3000K



4 **Work Area**
GABIO LED Pendant Louvre
 FLP70000v0-3000K

5 **ESTELA Recessed LED Luminaires**
 FPL62500v0-4000K



6 **SIENA FR Recessed LED Downlight**
 F54700RC-60D-4000K

7 **LUCCA Recessed Downlight**
 F31217RC / LR4407d-50H35D-4000K



8 **Meeting Area**
MARCO Mini Integrated LED Tracklight
 FTK70000v0-ru+024D-2800K

9 **LUCCA Recessed Downlight**
 F31217RC / LR4407d-50H24D-2800K



Vitality with Light

Reception

It's always true that a reception area should convey a strong corporate personality and give visitors a positive impression. The right lighting plan is a prerequisite in creating a welcoming atmosphere and projecting the corporate image from a professional, modern, classic to a stylish way.

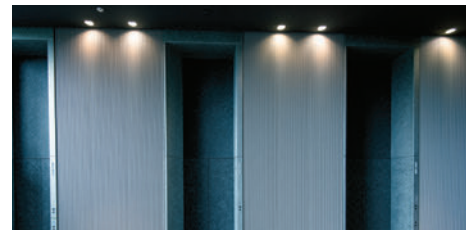
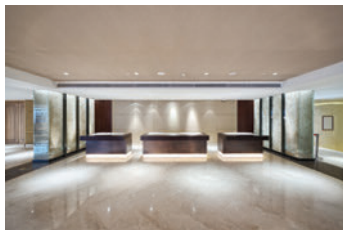
Accent lighting on feature walls and corporate logos makes for contrast and can better draw visitors' attention, while adequate task lighting provides sufficient illuminance for the receptionist.



MARCO



MONDENA

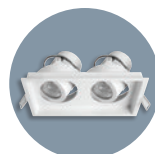


Corridors and Stairways

Lighting in corridors and stairways helps people find their way to transit areas. Sufficient and uniform general illumination ensures safe orientation and provides a sense of safety. By installing smart lighting solutions can achieve significant energy saving by dimming corridor lights when no motion is detected.



SIENA



ZEKI



Open Plan Office

An adaptable working environment is important for an open plan office. The ambient lighting should give visual comfort and consistency for team communication while higher illuminance of task lighting is ideal for concentrated work at task location. It not only improves productivity, but enhances employee morale and reduces energy consumption by equipping them with a flexible lighting control.



GABIO



ESTELA

Conference Rooms

As a multi-functional meeting area, lighting flexibility is always critical to meet various activities' requirements from video conferences and presentations to brainstorming sessions. A combination of general lighting with high visual comfort, balanced and soft illuminance at the table for face-to-face dialogue and dimmable light for presentation allows for dynamic use of space.

With the advanced features of smart lighting solution, users can have full control via smart device, of the ON/OFF, dimming and scene setting of environment.



GABIO



SIENA



Breakout Areas

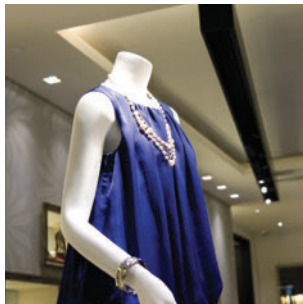
Breakout areas provide a third space for employees to relax, socialise and share ideas. Warmer colour temperature and lower lighting levels helps create a cosy and comfortable environment, allowing them to recharge and take a refreshing break from work.



SIENA



Filament Lamp



Showroom

Lighting is vital to a showroom that secures sales and delivers a brand identity. It helps to highlight special areas in the showroom, like your newest merchandise or your trending displays.

Diffused and uniform general lighting helps create an inviting atmosphere and makes customers stay longer. Accent lighting with high colour rendering index is always used to create contrast and visual impact on the forms, structures, textures and colour of the key objects.



MARCO



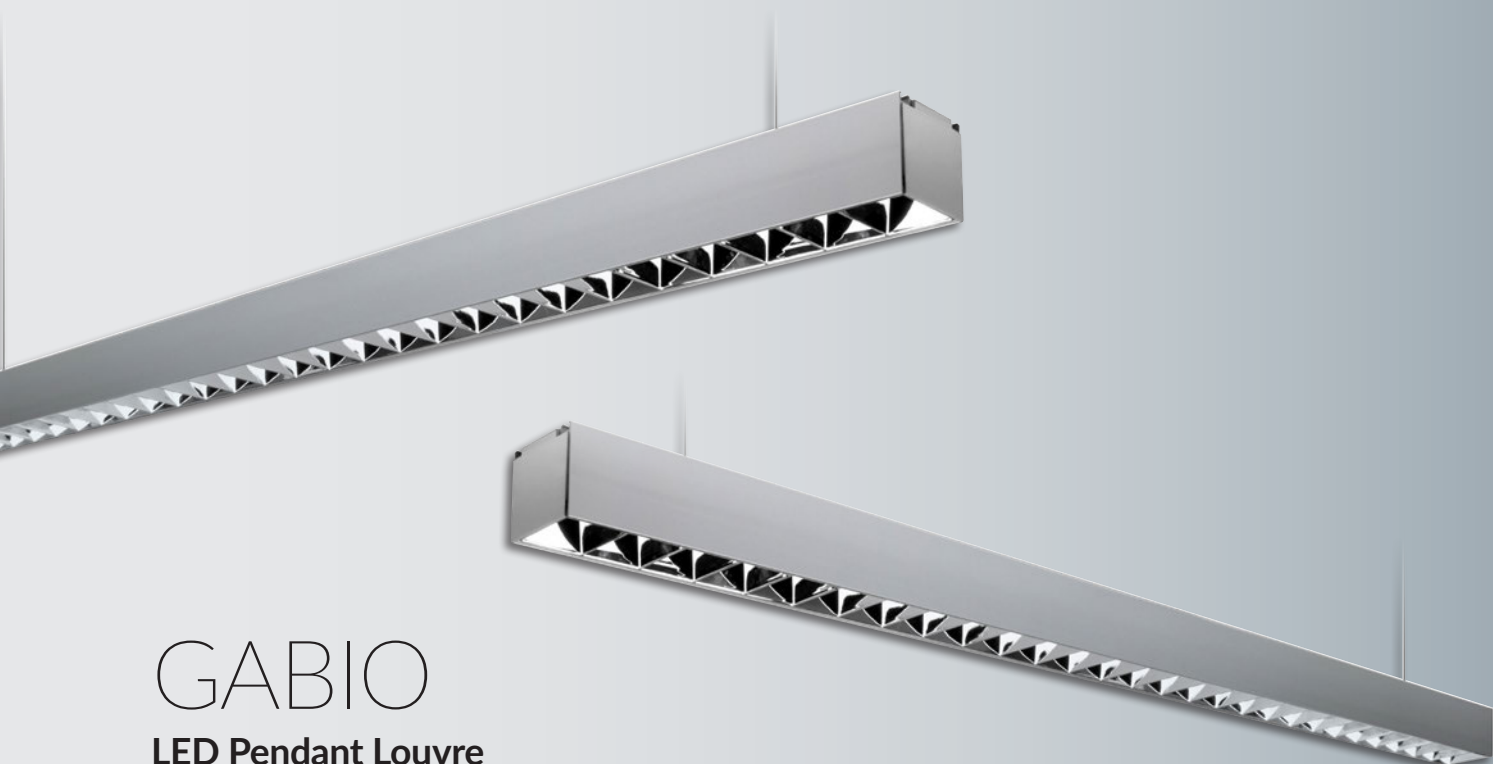
CARDO



Smart Lighting Solution

As a lighting system expert, MEGAMAN® smart lighting solution allows users to enjoy a new level of control in terms of convenience, efficiency and security. It can be applied to any new construction or retrofit projects for home, offices, retail stores and other scalable spaces. It is an affordable and fast way to experience home automation.





GABIO

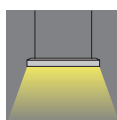
LED Pendant Louvre



- UGR
≤19
- λ
>0.9
- Class
II
- 50,000
hrs

MEGAMAN® GABIO LED pendant direct/indirect louvre brings suspended task lighting in a new direction by combining the minimalist design of louvres and the most advanced optical distribution within offices, classrooms, hotel reception and other commercial spaces.

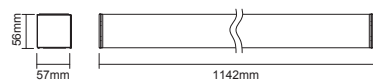
- Slim aluminium linear profile
- Louvre cell design with low glare rating (UGR≤19)
- Wide batwing light distribution and wide beam angle
- Available in suspension, recessed and surface mounting methods



Direct lighting

- 220-240V
- IP20
- 90°

Direct Light Distribution					
Model No.	Wattage (W)	Luminous Flux (lm)	Luminous Efficacy (lm/W)	Colour Temp. [CRI]	Dimmable
FLP70000v0	20	1900 [3000K] 2000 [4000K / 6500K]	95 [3000K] 100 [4000K / 6500K]	3000K / 4000K / 6500K [≥Ra80]	No
FLP70000v1	30	3300 [3000K] 3500 [4000K / 6500K]	110 [3000K] 117 [4000K / 6500K]		No
FLP70000v1-da	30	3300 [3000K] 3500 [4000K / 6500K]	110 [3000K] 117 [4000K / 6500K]		DALI



ESTELA

Recessed LED Luminaire



UGR ≤19
 $\lambda >0.9$
Class I
50,000 hrs

Designed for modern offices, schools and department stores, the MEGAMAN® ESTELA series is the ideal integrated LED louvre panel for general lighting purpose. Not only does it have a distinct appearance featuring flatness and robustness, but it also provides users with uniform illumination with visual comfort.

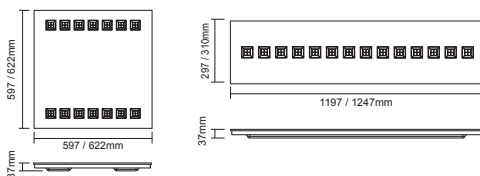
- Perfect replacement for T5 and T8 fluorescent louvre fitting
- Available in integrated switchable and DALI dimming options
- Mountable on both exposed T-bar and concealed T-bar ceilings
- Lightweight and simple dust-free design for easy maintenance
- Good cut off angle for visual comfort



Integrated Switchable Version					
Model No.	System Wattage (W)	Luminous Flux (lm)	System Luminous Efficacy (lm/W)	Dimension (mm)	Colour Temp. [CRI]
FPL62400v0	30	3500	117	L597 x W597 x H37	4000K / 6500K [>Ra80]
FPL62500v0				L1197 x W297 x H37	
FPL62600v0				L622 x W622 x H37	
FPL62700v0				L1247 x W310 x H37	



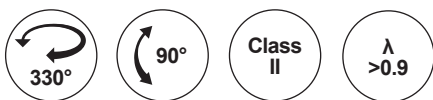
External driver version (Compatible with DALI dimming)					
Model No.	Wattage (W)	Luminous Flux (lm)	Luminous Efficacy (lm/W)	Dimension (mm)	Colour Temp. [CRI]
FPL62400v0-ex	27	3500	130	L597 x W597 x H37	4000K / 6500K [>Ra80]
FPL62500v0-ex				L1197 x W297 x H37	
FPL62600v0-ex				L622 x W622 x H37	
FPL62700v0-ex				L1247 x W310 x H37	





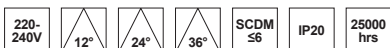
MARCO & MARCO Mini

Integrated LED Tracklight



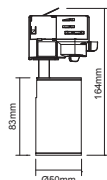
With an understated classic design and built-in driver, the MEGAMAN® MARCO LED Tracklight incorporates Hybrid Reflector Technology to offer superb beam control quality and creates a pleasurable customer experience which is absolutely critical to retail environment.

- Various beam angle options for use in a wide range of accent and display applications
- Ideal replacement for 75W halogen and up to 70W metal halide
- Excellent colour rendering index of Ra97 with Ultra RichColour option
- Long life of up to 50,000hrs
- Flicker-free lighting



MARCO Mini | 75 Halogen / 20W CDM-Rm Replacement

Model No.	Wattage (W)	Luminous Flux (lm)	Luminous Efficacy (lm/W)	Beam Angle (°)	Max. Luminous Intensity (cd)	Colour Temp. [CRI]	
FTK70000v0+012D FTA70000v0+012D	12	900 [2800K] 950 [4000K]	75 [2800K] 79 [4000K]	12	10000	2800K / 4000K [≥Ra80]	
FTK70000v0+024D FTA70000v0+024D		950 [2800K] 1000 [4000K]	79 [2800K] 83 [4000K]	24	5500	2800K / 4000K [≥Ra80]	
FTK70000v0+036D FTA70000v0+036D		950 [2800K] 1000 [4000K]	79 [2800K] 83 [4000K]	36	2650	2800K / 4000K [≥Ra80]	
FTK70000v0-r9+012D FTA70000v0-r9+012D		Ra90	720 [2800K] 760 [4000K]	60 [2800K] 63 [4000K]	12	8000	2800K / 4000K [≥Ra90]
FTK70000v0-ru+024D FTA70000v0-ru+024D		Ra97	750 [2800K] 800 [4000K]	63 [2800K] 67 [4000K]	24	4350	2800K / 4000K [Ra97]
FTK70000v0-ru+036D FTA70000v0-ru+036D		Ra97	750 [2800K] 800 [4000K]	63 [2800K] 67 [4000K]	36	2100	2800K / 4000K [Ra97]



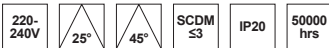


Optional accessories includes spread/rectangular lens, honeycomb louvre, barn doors and coloured filter.



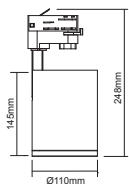
MARCO | 50W Metal Halide Replacement

Model No.	Wattage (W)	Luminous Flux (lm)	Luminous Efficacy (lm/W)	Beam Angle (°)	Max. Luminous Intensity (cd)	Colour Temp. [CRI]
FTK70100v0+012D FTA70100v0+012D	37	3100 [3000K] 3300 [4000K]	84 [3000K] 89 [4000K]	12	50000	3000K / 4000K [≥Ra80]
FTK70100v0+025D FTA70100v0+025D		3300 [3000K] 3500 [4000K]	89 [3000K] 95 [4000K]	25	18000	3000K / 4000K [≥Ra80]
FTK70100v0+045D FTA70100v0+045D		3300 [3000K] 3500 [4000K]	89 [3000K] 95 [4000K]	45	7000	3000K / 4000K [≥Ra80]
FTK70100v0-ru+012D FTA70100v0-ru+012D		2400 [3000K] 2500 [4000K]	65 [3000K] 68 [4000K]	12	35000	3000K / 4000K [Ra97]
FTK70100v0-ru+025D FTA70100v0-ru+025D		2600 [3000K] 2700 [4000K]	70 [3000K] 73 [4000K]	25	14000	3000K / 4000K [Ra97]
FTK70100v0-ru+045D FTA70100v0-ru+045D		2600 [3000K] 2700 [4000K]	70 [3000K] 73 [4000K]	45	5400	3000K / 4000K [Ra97]



MARCO | 70W Metal Halide Replacement

Model No.	Wattage (W)	Luminous Flux (lm)	Luminous Efficacy (lm/W)	Beam Angle (°)	Max. Luminous Intensity (cd)	Colour Temp. [CRI]
FTK70100v1+025D FTA70100v1+025D	52	4800 [3000K] 5000 [4000K]	92 [3000K] 96 [4000K]	25	25000	3000K / 4000K [≥Ra80]
FTK70100v1+045D FTA70100v1+045D		4800 [3000K] 5000 [4000K]	92 [3000K] 96 [4000K]	45	10000	3000K / 4000K [≥Ra80]
FTK70100v1-ru+025D FTA70100v1-ru+025D		3700 [3000K] 3800 [4000K]	71 [3000K] 73 [4000K]	25	19000	3000K / 4000K [Ra97]
FTK70100v1-ru+045D FTA70100v1-ru+045D		3700 [3000K] 3800 [4000K]	71 [3000K] 73 [4000K]	45	8000	3000K / 4000K [Ra97]
FTK70100v1-pw+025D FTA70100v1-pw+025D		3500	67	25	14000	3000K [≥Ra80]
FTK70100v1-pw+045D FTA70100v1-pw+045D		3500	67	45	7600	3000K [≥Ra80]



MEGAMAN® Perfect White technology offers retailers a distinct advantage enhancing textiles by bringing whites to life while still offering superb efficacy and energy efficiency, compared to traditional light sources. It is ideally suited for retail lighting as well as other accent and display applications.

RichColour

MEGAMAN® RichColour Series is designed to maximise the richness and quality of colours with high colour rendering of up to Ra97.

SIENA FR

Recessed LED Downlight



Compact in size and with an integrated driver, the MEGAMAN® SIENA FR is a range of integrated LED recessed downlights that facilitates easy installation. The SIENA FR range provides excellent uniform light distribution and delivers high system efficiency when compared to conventional downlights in which a substantial amount of light is lost in the system, making it an ideal general lighting solution to commercial installation.




- Range of sizes from 3", 4", 5", 6" and 8" diameter allowing retrofit replacement in existing ceiling cut-outs
- No external driver required which facilitates easy installation and maintenance
- Excellent colour rendering index of up to Ra92 with RichColour option
- U-DIM™ option provides seamless and flicker-free dimming
- Facet reflector enables even light distribution

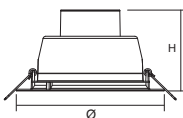
220-240V

50000 hrs

White Silver

Professional Series

Model No.	Wattage (W)	Luminous Flux (lm)	Luminous Efficacy (lm/W)	Beam Angle (°)	Dimension (mm)	Cut-Out (mm)	Colour Temp. [CRI]	Dimmable
FDS54400v0	4	350	88	90	Ø110 x H68	Ø85	2800K / 4000K / 6500K [>Ra80]	No
F54500RC	6	550	92	90	Ø130 x H73	Ø105	2800K / 4000K / 6500K [>Ra80]	No
F54600RC	9.5	950	100	90	Ø145 x H84	Ø125	2800K / 4000K / 6500K [>Ra80]	No
F54600RC-d 	10.5	950	90	90	Ø145 x H84	Ø125	2800K / 4000K / 6500K [>Ra80]	100-5% ¹
F54700RC	15.5	1560	101	90	Ø172 x H94	Ø150	2800K / 4000K / 6500K [>Ra80]	No
F54700RC-60D	15.5	1560	101	60	Ø172 x H94	Ø150	2800K / 4000K [>Ra80]	No
F54700RC-d 	16.5	1560	95	90	Ø172 x H94	Ø150	2800K / 4000K / 6500K [>Ra80]	100-5% ¹
F54800RCv2	15.5	1560	101	90	Ø225 x H100	Ø200	2800K / 4000K / 6500K [>Ra80]	No
F54800RC	19	2000	105	90	Ø225 x H100	Ø200	2800K / 4000K / 6500K [>Ra80]	No
F54800RC-60D	19	2000	105	60	Ø225 x H100	Ø200	2800K / 4000K [>Ra80]	No
F54800RCv1 	25.5	2700	106	90	Ø225 x H100	Ø200	2800K / 4000K / 6500K [>Ra80]	No



U-DIM™

Compatible with BOTH Leading-edge and Trailing-edge Conventional Dimmers for 100-5% Linear Dimming.

¹ Capable of linear dimming from 100% to 5% when working with most conventional dimmers.



220-240V 50000 hrs

White Silver

Professional Series | RichColour

Model No.	Wattage (W)	Luminous Flux (lm)	Luminous Efficacy (lm/W)	Beam Angle (°)	Dimension (mm)	Cut-Out (mm)	Colour Temp. [CRI]
FDS54400v0-r9 Ra92	4	320	80	90	Ø110 x H68	85	2800K / 4000K / 6500K [Ra92]
F54500RC-R9 Ra92	6	500	83		Ø130 x H73	105	
F54600RC-R9 Ra92	9.5	850	89		Ø145 x H84	125	
F54700RC-R9 Ra92	15.5	1400	90		Ø172 x H94	150	
F54800RCv2-R9 Ra92	15.5	1400	90		Ø225 x H100	200	
F54800RC-R9 Ra92	19	1800	95		Ø225 x H100	200	
F54800RCv1-R9 Ra92 High Output	25.5	2450	96		Ø225 x H100	200	



RichColour

MEGAMAN® RichColour Series is designed to maximise the richness and quality of colours with high colour rendering of up to Ra97.

LED Reflectors



As the retrofit replacement of halogen lamps, the MEGAMAN® LED Reflectors range has the same compact profile to halogen counterparts but offers significant energy saving. Available in various beam angle options, the MEGAMAN® LED Reflector complements your lighting fixtures to create uniform and glare-free light, making it ideal for general and spot lighting in commercial applications.

- Perfect replacement for traditional halogen MR16, PAR16 and AR111
- Multiple beam options from narrow to wide angles for various applications
- Excellent colour rendering index of up to Ra95 with RichColour option
- Hybrid Reflector offers precise beam control and efficacy
- U-DIM™ option to provide seamless and flicker-free dimming
- Long rated life of up to 40,000 hours

MR16



GU5.3 35000 hrs

Smart Series 350mA (DC 18V)		Wattage (W)	Max. Luminous Intensity (cd)	Beam Angle (°)	Total Luminous Flux (lm)	Colour Temp. [CRI]	Diameter (mm)	Length (mm)	Dimmable	Energy Label	Product Photo
ER200065/dm-HRv00-SP		6.5	7000	12	525	2800K / 3000K / 4000K [Ra80]	50	49	100-1%	A	1
ER200065/dm/r9-HRv00-SP		6.5	4700	12	500	2800K / 4000K [Ra90]				A+	1
ER200065/dm-HRv00-NF		6.5	3000	24	700	2800K / 3000K / 4000K [Ra80]				A++	2
ER200065/dm-HRv00-WF		6.5	1800	36	700	2800K / 3000K / 4000K [Ra80]				A++	3

Suggested driver : LD0509x1d-C350



GU5.3

Smart Series AC12V		Wattage (W)	Max. Luminous Intensity (cd)	Beam Angle (°)	Total Luminous Flux (lm)	Colour Temp. [CRI]	Rated Life (hrs)	Diameter (mm)	Length (mm)	Dimmable	Energy Label	Product Photo
ER203080/dm-LNv00-SP		8	7500	12	450	2800K / 3000K / 3500K / 4000K [Ra80]	25000	50	49	100-10%	A+	4
ER203080/dm-LNv00-NF		8	3000	24	600	2800K / 3000K / 3500K / 4000K [Ra80]	25000	50	49	100-10%	A+	5
ER203080/dm-LNv00-WF		8	1800	36	600	2800K / 4000K [Ra80]	25000	50	49	100-10%	A+	6
ER3308dR9LN-FL		8	2550	24	520	2800K / 4000K [Ra95]	25000	50	49	100-10%	A	4
ER3308dR9DG-WFL		8	1300	36	500	2800K / 4000K [Ra95]	25000	45	49	100-10%	A	7
ER4207R9LN-WFL		7	880	40	400	3000K [Ra95]	15000	45	48	No	A	8

PAR16

G53 25000 hrs



Professional Series		220-240V	RichColour+	R9 value ≥75							
Model No.	Wattage (W)	Max. Luminous Intensity (cd)	Beam Angle (°)	Total Luminous Flux (lm)	Colour Temp. [CRI]	Diameter (mm)	Length (mm)	Dimmable	Energy Label	Product Photo	
LR5906dR9HR-75H24D	6	2200	24	460	2800K / 4000K [Ra95]	50	57	100-5%	A+	9	
LR5906dR9HR-75H35D		1150	35							10	

AR111

G53 40000 hrs



Professional Series		AC12V								
Model No.	Wattage (W)	Max. Luminous Intensity (cd)	Beam Angle (°)	Total Luminous Flux (lm)	Colour Temp. [CRI]	Diameter (mm)	Length (mm)	Dimmable	Energy Label	Product Photo
ER2813dHR-75H08D	13	16000	8	750	2800K [Ra82] / 4000K [Ra85]	111	58	100-10%	A	11
ER2812dR9HR-75H08D	12	13000	8	650	2800K / 4000K [Ra95]		58			11
ER4013dHR-75H24D	13	5000	24	900	2800K [Ra82] / 4000K [Ra85]		58			12
ER4013dR9HR-75H24D	13	3600	24	800	2800K / 4000K [Ra95]		58			12
ER4113dHR-75H45D	13	2000	45	900	2800K [Ra82] / 4000K [Ra85]		62			13
ER4113dR9HR-75H45D	13	1500	45	800	2800K / 4000K [Ra95]		58			13



GU10 40000 hrs

Professional Series		220-240V								
Model No.	Wattage (W)	Max. Luminous Intensity (cd)	Beam Angle (°)	Total Luminous Flux (lm)	Colour Temp. [CRI]	Diameter (mm)	Length (mm)	Dimmable	Energy Label	Product Photo
LR6511dHR-75H08D	11	16000	8	750	2800K [Ra82] / 4000K [Ra85]	111	66	100-5%	A+	14
LR6511dR9HR-75H08D		13000	8	650	2800K / 4000K [Ra95]				A	14
LR6611dHR-75H24D		5000	24	900	2800K [Ra82] / 4000K [Ra85]				A+	15
LR6611dR9HR-75H24D		3600	24	800	2800K / 4000K [Ra95]				A	15
LR6711dHR-75H45D		2000	45	900	2800K [Ra82] / 4000K [Ra85]				A+	16
LR6711dR9HR-75H45D		1500	45	800	2800K / 4000K [Ra95]				A+	16



www.megaman.cc

© Copyright 2017. All rights reserved by MEGAMAN®
All information stated is correct at the time of printing and subject to changes without prior notice.